



Cable ID: LINHA LANDUTTI CATEGORIA 5E 03

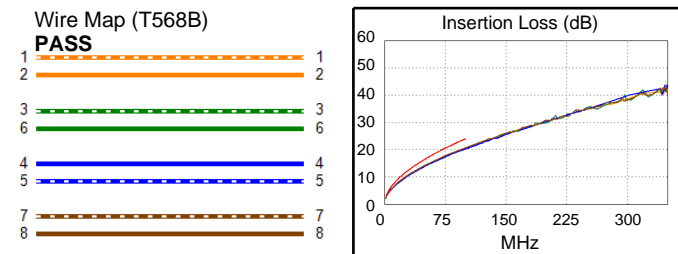
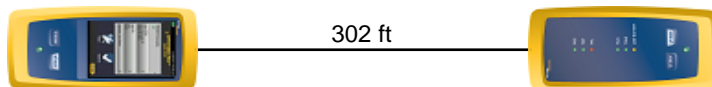
Test Limit: TIA Cat 5e Channel
Limits Version: V7.9
Date / Time: 10/22/2024 12:57:52 PM
Operator: AURELIO DUARTE
Headroom 6.5 dB (NEXT 3,6-4,5)
Cable Type: Cat 5e U/UTP
NVP: 68.0%

Main: Versiv
S/N: 23380039
Software Version: V6.11 Build 2
Calibration Date: 05/16/2024
Adapter: DSX-602 (DSX-CHA004)
S/N: 23350225

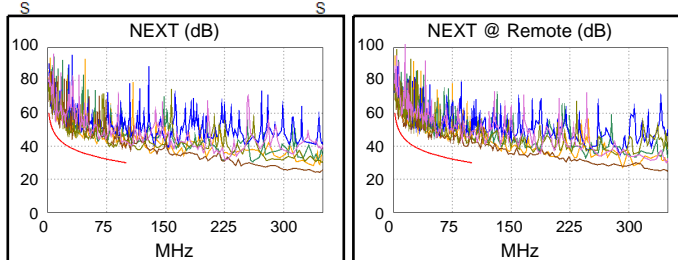
Test Summary: PASS

Remote: Versiv
S/N: 23380044
Software Version: V6.11 Build 2
Calibration Date: 05/16/2024
Adapter: DSX-602R (DSX-CHA004)
S/N: 23350224

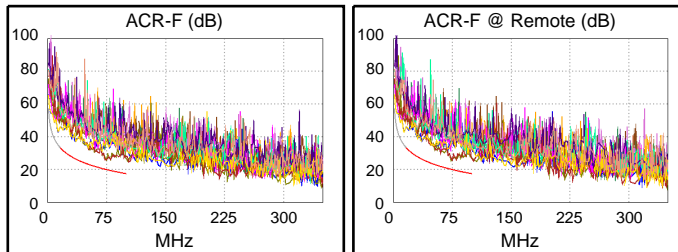
Length (ft), Limit 328	[Pair 3,6]	302
Prop. Delay (ns), Limit 555	[Pair 7,8]	460
Delay Skew (ns), Limit 50	[Pair 7,8]	9
Resistance (ohms)	[Pair 7,8]	18.45
Insertion Loss Margin (dB)	[Pair 7,8]	3.3
Frequency (MHz)	[Pair 7,8]	100.0
Limit (dB)	[Pair 7,8]	24.0



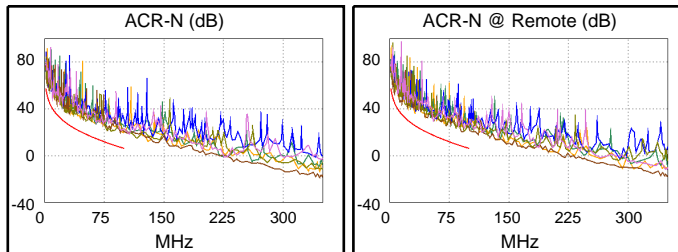
	Worst Case Margin		Worst Case Value	
PASS	MAIN	SR	MAIN	SR
Worst Pair	3,6-4,5	3,6-4,5	3,6-4,5	3,6-4,5
NEXT (dB)	6.6	6.5	8.7	8.3
Freq. (MHz)	31.5	6.0	99.8	92.3
Limit (dB)	38.6	50.7	30.1	30.7
Worst Pair	3,6	3,6	3,6	3,6
PS NEXT (dB)	7.6	7.8	8.6	9.5
Freq. (MHz)	31.8	6.0	99.5	92.3
Limit (dB)	35.6	47.7	27.1	27.7



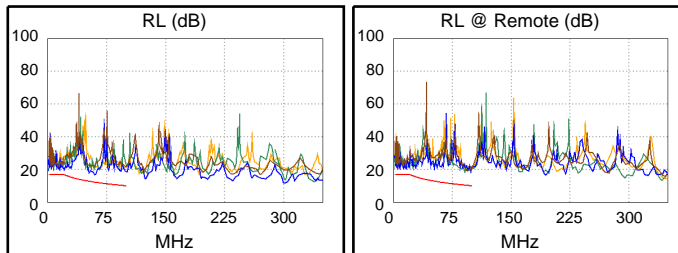
	Worst Case Margin		Worst Case Value	
PASS	MAIN	SR	MAIN	SR
Worst Pair	4,5-3,6	3,6-4,5	4,5-3,6	3,6-4,5
ACR-F (dB)	5.1	5.2	5.1	5.2
Freq. (MHz)	73.3	73.5	73.3	73.5
Limit (dB)	20.1	20.1	20.1	20.1
Worst Pair	3,6	4,5	4,5	4,5
PS ACR-F (dB)	8.0	7.7	10.3	10.3
Freq. (MHz)	73.3	73.5	100.0	100.0
Limit (dB)	17.1	17.1	14.4	14.4



	Worst Case Margin		Worst Case Value	
N/A	MAIN	SR	MAIN	SR
Worst Pair	3,6-7,8	3,6-4,5	3,6-4,5	3,6-4,5
ACR-N (dB)	8.6	7.4	12.3	11.9
Freq. (MHz)	25.9	6.0	99.8	92.3
Limit (dB)	28.5	45.2	6.1	7.7
Worst Pair	3,6	3,6	3,6	3,6
PS ACR-N (dB)	9.7	8.7	12.2	13.6
Freq. (MHz)	31.8	6.0	99.8	94.8
Limit (dB)	22.6	42.2	3.1	4.2



	Worst Case Margin		Worst Case Value	
PASS	MAIN	SR	MAIN	SR
Worst Pair	4,5	4,5	4,5	3,6
RL (dB)	2.3	3.3	4.2	7.4
Freq. (MHz)	20.6	16.0	60.8	91.3
Limit (dB)	16.9	17.0	12.2	10.4



Compliant Network Standards:
 10BASE-T 100BASE-TX 100BASE-T4
 1000BASE-T 2.5GBASE-T ATM-25
 ATM-51 ATM-155 100VG-AnyLan
 TR-4 TR-16 Active TR-16 Passive